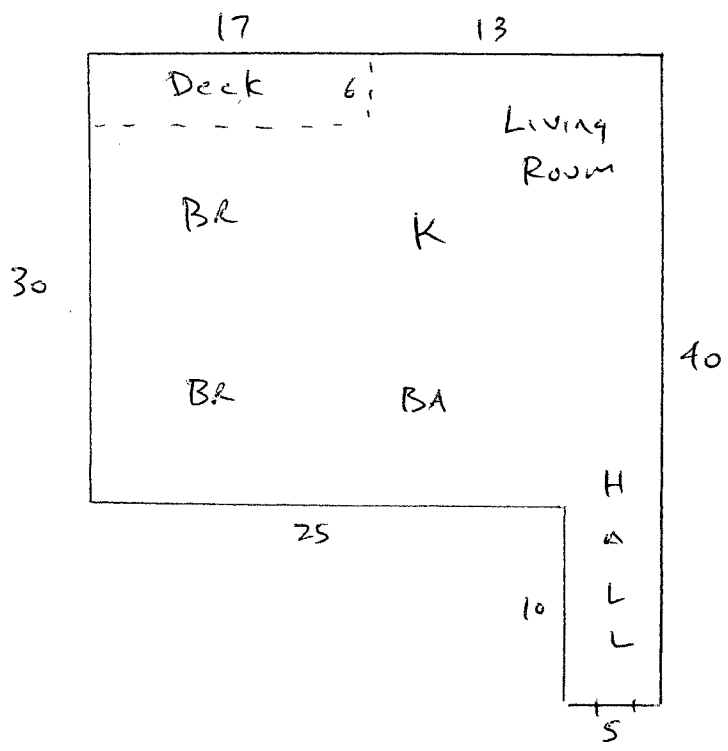


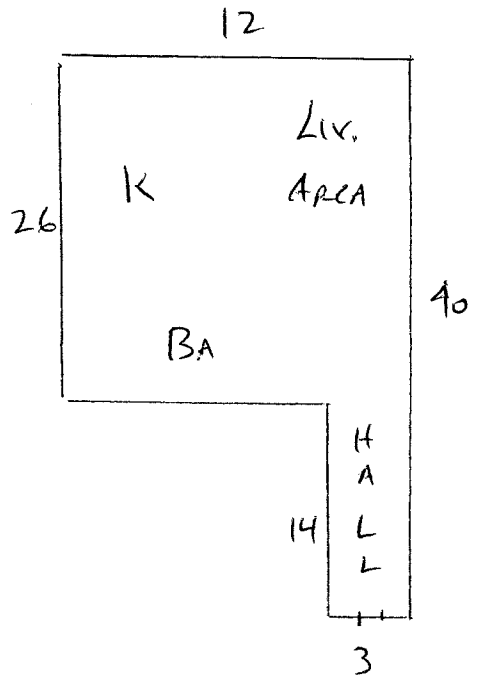
2B/1BA



NRA

$$\begin{aligned}
 40 \times 30 &= 1200 \\
 17 \times 6 &\langle 102 \rangle \\
 25 \times 10 &\langle 250 \rangle \\
 \hline
 \text{Total} &= 848 \#
 \end{aligned}$$

STUDIO



NRA

$$\begin{aligned}
 26 \times 12 &= 312 \\
 14 \times 3 &= 42 \\
 \hline
 \text{Total} &= 354 \#
 \end{aligned}$$