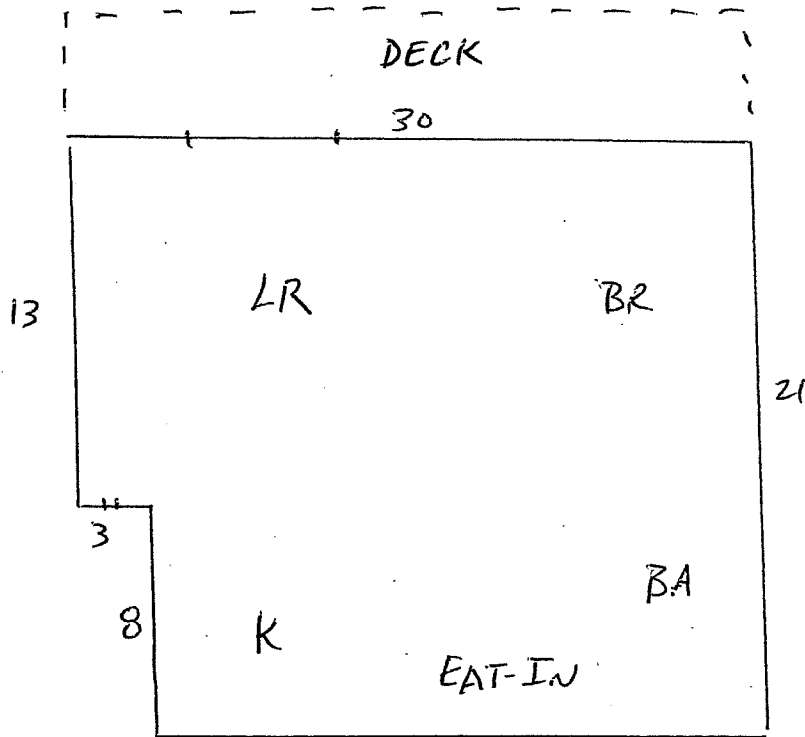


1B/1BA



NRA

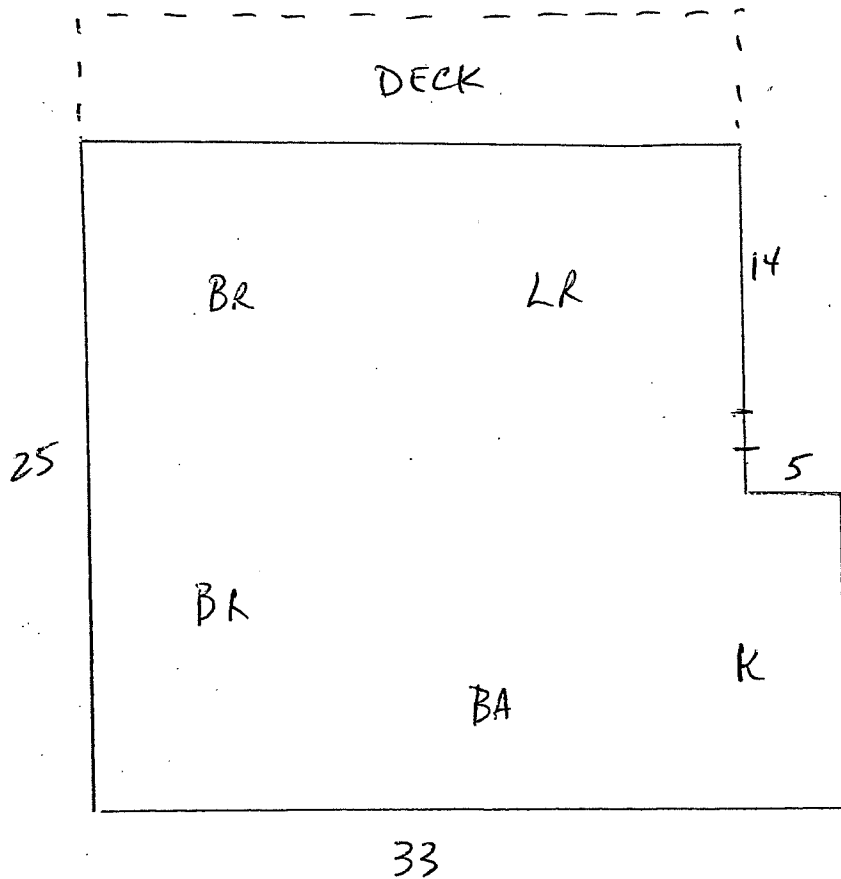
$$30 \times 21 = 630$$

$$8 \times 3 \quad \langle 24 \rangle$$


---


$$\text{TOTAL } 606 \#$$

2B/1BA



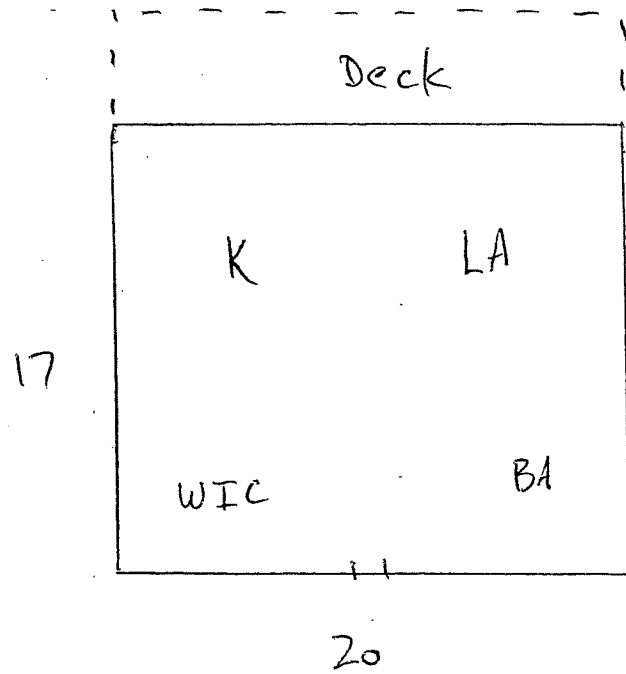
NRA

$$33 \times 25 = 825$$

$$14 \times 5 \quad \langle 70 \rangle$$


---


$$\text{TOTAL } 755 \#$$



N/A

$$20 \times 17 = 340 \text{ sq ft}$$